

# Big Sky Community Corporation

## 2008: a year in review

Last year marked the 10th anniversary of the Big Sky Community Corporation. Created in 1998 as an affiliate organization of the Big Sky Owners Association, the BSCC (a 501(c)(3) not for profit corporation) exists to promote, acquire, preserve, and maintain land, parks, trails and easements for the use of the people of the Big Sky community and public.

2008 was a busy year for the BSCC with many administrative changes, incredible community support, and several key projects completed through our many volunteer programs. The BSCC is managed by a volunteer Board of Directors. Newly seated in 2008, the board is comprised of a cross section of Big Sky who have an extraordinary dedication to our area parks and trails.

and include: Kevin Frederick (Chair), John Leeper (Vice Chair), Trevor McSpadden (Secretary), Clare Nixon (Treasurer) and Directors: Jan Ayres, Eric Ladd, Jany Patterson, and Leslie Perry. (Arts Council of Big Sky representative).

Funded through the generosity of donors, foundations, and grants (most notably, the Big Sky Resort Tax Area District), the BSCC currently manages 83 acres of public parks including the Big Sky Community Park, Historic Crail Ranch, Ousel Falls Park and Trail, and Kircher Park. The BSCC cares for more than 13 miles of local trails and develops all of its community programs through seven active committees:

**Parks** – Chaired by Mary Michelle “Mitch” Furr, this committee promotes

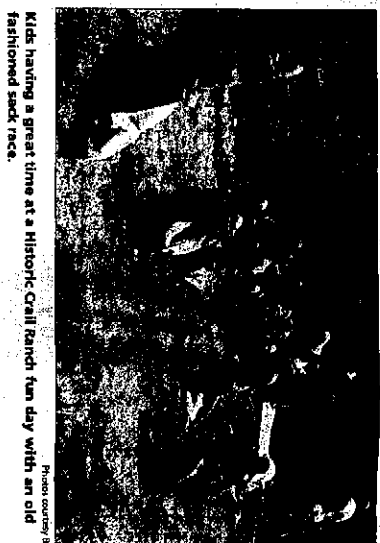


Photo courtesy of  
**Kids having a great time at a Historic Crail Ranch fun day with an old fashioned sack race.**

awareness and appreciation for our area parks and helps to develop and maintain them. This past year, Mitch and her volunteers have worked

intensely to create funds to develop the additional acreage at the Big Sky Community Park to include additional softball fields, a soccer area,

skatepark, and new concert stage. Expect to see the Park Committee active again this year at many local events including fase of Big Sky Country Fair, and Community Park Clean-Up. Lindsay Kiland is taking over as Parks Program Chair in 2009.

Construction Team – Chaired by Trevor McSpadden, this group has worked



The community softball fields provide a summer gathering place as area teens play for bragging rights and the joy of athletic competition. Youth and adult teams play there.



Photo courtesy of  
**Mary Jane McGarity and Milindy N. Park Planning to a meadow concert**

can be reviewed at the BSOA offices in the Meadow Center and the project is currently out for construction bids with bid forms due on February 25th.

Trails – Chaired by John Leeper, the Trails Program is responsible for completing our newest community asset, the Spur Road Trail which connects Ophir School to Ousel Falls Trailhead through the Town Center.

This fall, the Trails Program is completing a connector off the Spur Road Trail through the new Krieger Park and works to fund their projects by writing grants, managing the trail donation collection boxes around Big Sky, and through Bridge Plank sales. Steve Johnson will lead the Trails Program in 2009.

Historic Crail Ranch – Chaired by Al Lockwood, the Historic Crail Ranch Conservators care for Big Sky's original homestead, which is open to visitors every summer. The unique log structure preserves the story of the

Frank Crail family and their life in the Big Sky community in the early 1900s. This past summer, the Conservators sponsored many activities to the delight of locals and visitors which included

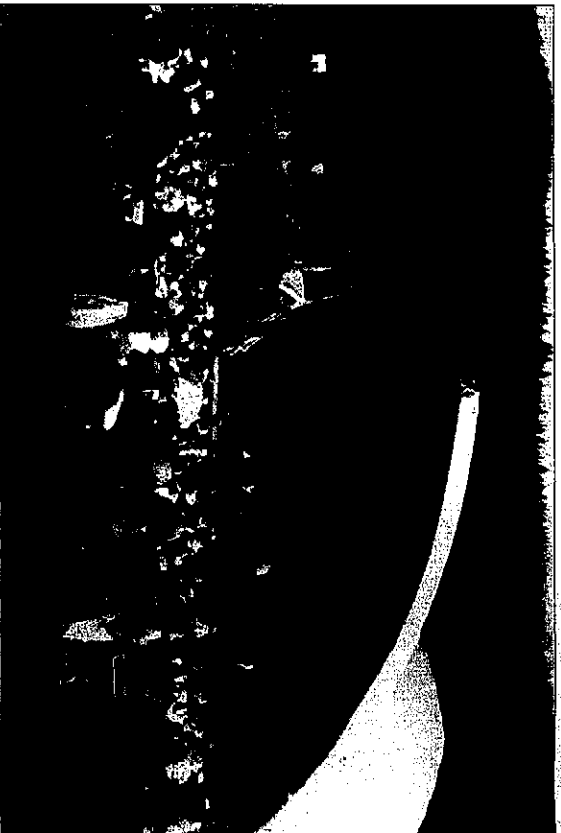
turn of the century fun and games for kids, music and cultural festivals, quilt shows, bake sale and a community garden.

This year, the Conservators are completing a much needed project to inventory and digitally archive the many historical documents associated with the homestead.

Big Sky Tennis Association – Chaired by Jacque Persons, the volunteers of Big Sky Tennis manage two courts areas (next to the Community Park and at Ophir



Kowark i bring



Symphony in the Community Park brought by the hard working volunteers of the Arts Council of Big Sky.

School) and bring both youth and adult tennis programs to our community. Jacque and her volunteers brought a tennis pro to Big Sky last summer for youth and adult instruction and also managed the completion of the new parking and connector road at the Ophir courts.

Big Sky Softball Association – Our softball commissioner Eric Ladd leads a 15-team league of nearly 500 softball playing locals. New this year were seven youth teams managed by Joe Perry and Dave House of Big Sky. The Softball League has taken a leadership role in raising money to support Phase I construction at the Big Sky Community Park to include additional play fields and an improved concert area. Both the Cross Canadian Ragweed Concert of 2007 and the Young Dubliners concert in September 2008 raised money towards the park construction fund.

Camp Big Sky – Directed by Kate

Coleman with support from Leif West.

Camp Big Sky held more than 17 recreational and educational camps for kids this past summer. From finger painting to mountain biking and rock climbing, Camp Big Sky is in its fourth successful summer and hosts between 150 and 300 children each year in a variety of healthy outdoor activities.

Big Sky Disc Golf – New to BSOA for summer of 2009 and led by Jason Meyers and Home Kenny, Big Sky's newest 9-hole disc golf course is under construction and with the generosity of the Water & Sewer District, it will be located on their property just east of the treatment plant. Expect a great course inauguration party some time this summer.

We hope you enjoy our bid/year in review and accept our heartfelt thanks for the success of this past year. Thanks Big Sky – we are all looking forward to a terrific 2009!



Chad Johnson shows his moves at Camp Big Sky's State Camp.