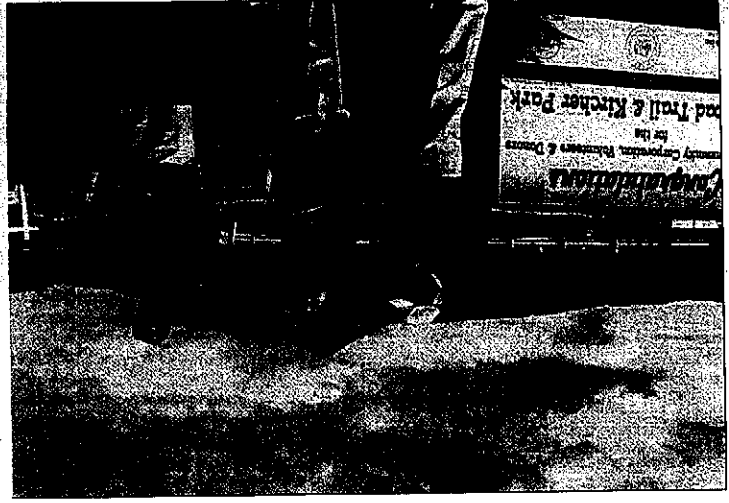


# Kircher Park dedication Ribbon-cutting ceremony

By Laura Bell



Bill Olson, John Leeper and John Kircher at the Kircher Park dedication

About 100 residents attended the dedication of Kircher Park Saturday, Sept. 13th on a blustery Saturday. John Kircher was in attendance on behalf of the family. The celebration also commemorated the 10th anniversary of the Big Sky Community Corporation, the entity which oversees the local parks with the help of volunteers.

John Leeper, Vice Chairman of the Big Sky Community Corporation (BSCC) stood in for Chairman Kevin Frederick at the park's dedication. The BSCC was formed in 1988 as a 501(c)3 corporation to own and maintain the growing inventory of community assets that serve all of Big Sky. Presently the corporation owns and manages more than 83 acres of parkland and 20 miles of trails that have a net asset value of almost two million dollars.

At the dedication Leeper said the following, "We are gathering today to celebrate the birthday of BSCC and what better way to do it than to honor the Kircher family. The Kirchers have been consistent and generous benefactors of the Big Sky community and we are

Kircher continues on pg. 18.

**WE DO NOT, AT PRESENT, HAVE A HITTING RAIL.**  
**(BUT WE HAVEN'T RULED IT OUT.)**

There's a lot to enjoy in our summer paradise. You can get away from it all and still be close to the important stuff. Like prescription medication. Or over-the-counter remedies for Chagas' Inghis and abraded buttocks. Stop by Bowen's Pharmacy at Big Sky for all that and then some. We're right here in the neighborhood. With convenient parking for most forms of locomotion.

Meadow Village Center | 36 Center Ln. Suite 2  
406.993.9390 | www.bowenspharmacy.com

Chrysler to Bozeman. The Kitchers could have sold this property at a considerable profit, but instead chose to donate it to the Big Sky Community Corporation. We plan to be careful custodians of this private property for common good. We have plans for a pedestrian trail down to the waterfront with picnic facilities and board walks to care of the winds and assist in environmental cleanup. Larger concluded before introducing John Kitcher to a round of applause.



The lovely volunteers raise a glass to the park

Handshakes held a successful fundraiser for the park at Lone Mountain Ranch in June. The event raised \$40,000. BSCC is still accepting donations for the park. "This park presents an opportunity for community legacy," McGarity explained. "It takes us two years or five years to raise the funds and complete it, we are going to keep chipping away."

Chrysler to Bozeman. The Kitchers could have sold this property at a considerable profit, but instead chose to donate it to the Big Sky Community Corporation. We plan to be careful custodians of this private property for common good. We have plans for a pedestrian trail down to the waterfront with picnic facilities and board walks to care of the winds and assist in environmental cleanup. Larger concluded before introducing John Kitcher to a round of applause.

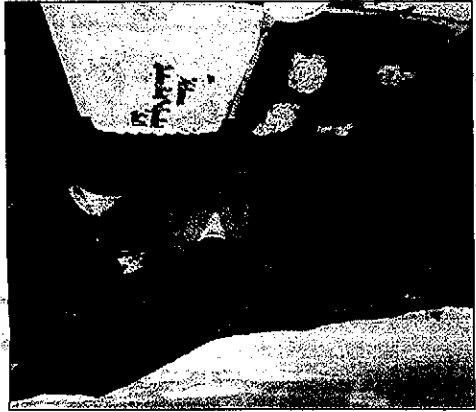
A barbecue was provided by Town Center and beer donated by Lone Peak Brewery. Gassy Quitters supplied bikes for those who wished to ride the new trail. The BSCC thanked the Big Sky Resort Tax Board for the bulk of the funding and the Montana Department of Transportation for the use of the right-of-way. Thanks was also given to Montana Fish, Parks & Wildlife. In addition to food, drink and both chocolate and vanilla cakes, party goers also received birthday hats to commemorate a successful 10 years and thank the volunteers. This summer the BSCC received grant money for engineering and the primary design of the Community

dedicating our new park in their name. Also, to complement the dedication of the Spur Road Trail, a six-year goal of we are recognizing the completion of the BSCC Trail Committee and its project manager, Bill Olson. Our first order of business is to dedicate the new park, followed by a commemoration of the completion of the Spur Road Trail. This will be followed by a symbolic joint ribbon cutting, he continued. Then Leeper described the boundaries of the park and what it offers: "The park consists of eight acres of prime real estate which borders on the South Fork of the West Fork of the Galatin River. This valuable piece of property will be another jewel in the growing park system, which can be enjoyed by both residents and guests. The Kitchers, through Big Sky Resort and Bozeman USA Inc, have been the backbone of the on-going Big Sky story.



Mary Jane McGarity, John Kitcher, Bill Olson and Mindy Nowakowski cut the ribbon.

razes: "more and more local residents are willing to invest what is needed to keep Big Sky a special spot. They sold, insurance, the Taylor family. They sold, and top outing groups find a welcoming home could make our park a true destination. We have the opportunity to provide a distinctive feature for our beautiful 33-acre parcel in the meadow at a fraction of the market value, a Tax Board for the bulk of the funding and the Montana Department of Transportation for the use of the right-of-way. Thanks was also given to Montana Fish, Parks & Wildlife. In addition to food, drink and both chocolate and vanilla cakes, party goers also received birthday hats to commemorate a successful 10 years and thank the volunteers. This summer the BSCC received grant money for engineering and the primary design of the Community



Children ogle the cakes

their Middle Fork property to help the more for generations to come. With the Big Sky Community Park, we have a chance to create the park of our dreams, a professionally designed nucleus for local activity and shared uses, bring businesses and visitors to the area and attract events and artists. But what the Taylors know is that when done right, parks become main hubs in their communities. Today, people flock to these renowned venues to celebrate and experience life-enhancing culture. But long before their acclaim, both venues started out as tiny gathering places in enchanting settings. The park has such a feeling. Located deep in the property, surrounded by spectacular views, there is a natural amphitheater. With its lawn-terrace seating, this feature could make a premier location to enjoy concerts and other cultural events.

As our history shows, Big Sky draws the lovely new park. "Thank you" to the Kitcher family for "Congratulations to the BSCC and Mary Whittle. We have the ideal location and now an opportunity for an incredible legacy." organized and spontaneous recreation, a true community requires a center for cards in the bookshelves. "While some owned venues to celebrate and experience life-enhancing culture. But long before their acclaim, both venues started out as tiny gathering places in enchanting settings. The park has such a feeling. Located deep in the property, surrounded by spectacular views, there is a natural amphitheater. With its lawn-terrace seating, this feature could make a premier location to enjoy concerts and other cultural events.